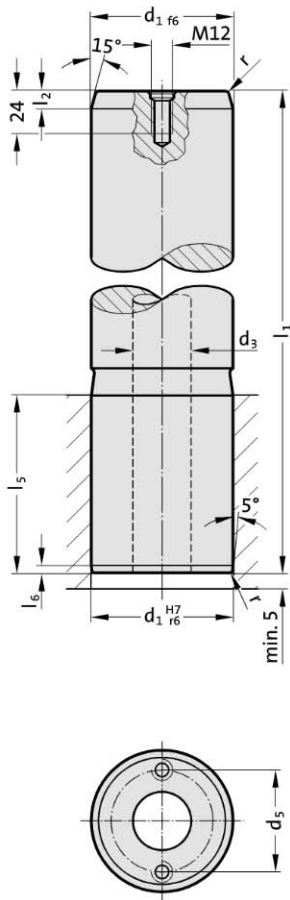




# Guide pillar for large tools, DIN 9833/ISO 9182-3

2022.19.



**Material:**

Steel, surface hardened  
Surface hardness: 60 + 4 HRC, Hardness penetration 1,5 + 1 mm

**Execution:**

ground  
up to  $\varnothing d_1 = 80$  without central hole  
by  $\varnothing d_1 = 80$  with 1 lifting thread M12  
from  $\varnothing d_1 = 100$  with central hole (through) and with 2 lifting threads M12

**Note:**

The guide pillar is only recommended for use with solid lubricants.  
Matching guide combinations, see selection matrix at the beginning of chapter D.  
Assembly guide lines / Dimensional requirements and tolerances at the end of chapter D.

**2022.19.** Guide pillar for large tools, DIN 9833/ISO 9182-3

	25	32	40	50	63	80	100	125	160
$d_1$	25	32	40	50	63	80	100	125	160
$d_3$	-	-	-	-	-	-	50	65	95
$d_5$	-	-	-	-	-	-	72	90	132
r	2	2	2	2.5	2.5	3	3	4	4
$l_2$	8	8	8	10	10	10	10	12	12
$l_5$	40	45	56	70	80	100	125	140	180
$l_6$	4	4	4	4	4	4	4	5	5
$l_1$									
125	●	●							
140	●	●	●						
160	●	●	●	●					
180	●	●	●	●	●				
200	●	●	●	●	●	●			
224	●	●	●	●	●	●	●		
250		●	●	●	●	●	●	●	
280			●	●	●	●	●	●	
315				●	●	●	●	●	●
355				●	●	●	●	●	●
400					●	●	●	●	●
450						●	●	●	●
500						●	●	●	●
560									●

**Ordering Code (example):**

Guide pillar for large tools, DIN 9833/ISO 9182-3 = **2022.19.**  
 Guide diameter  $d_1$  63 mm = 063.  
 Length  $l_1$  180 mm = 180  
 Order No = **2022.19.063.180**