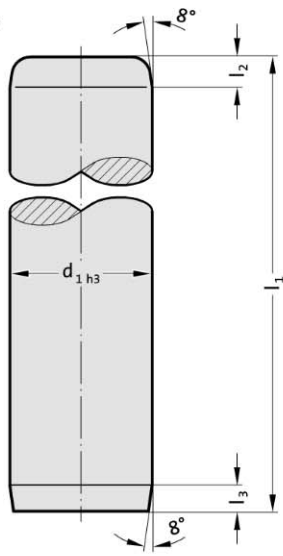


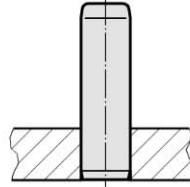


Guide pillar DIN 9825/ISO 9182-2

202.19.



Mounting example



Material:

Steel, (Core strength: $\geq 900 \text{ N/mm}^2$) surface hardened
 Surface hardness: $60 + 3 \text{ HRC}$, Hardness penetration $\geq 1,8 \text{ mm}$ (up to $\varnothing 12$, troughhardened)

Execution:

fine-ground and superfinished
 Method of manufacturing entails that centre holes are not concentric with O.D.

Note:

$\varnothing 3$ to $\varnothing 8$ are not supplied classified.

$\varnothing 10$ to $\varnothing 12$ only available in tolerance range yellow = .10

Bearing clearance / Preloading see pairing classification at the beginning of chapter D.

Matching guide combinations, see selection matrix at the beginning of chapter D.

Assembly guide lines / Dimensional requirements and tolerances at the end of chapter D.

Tolerance range:

yellow = .10

green = .20

red = .30

202.19. Guide pillar DIN 9825/ISO 9182-2

d_1	3	4 5	6	8	10	11 12	15 16	19 20	24 25	30 32	38 40	48 50	60 63	80
l_2	2	2	2	3	3	3	4	4	6	6	6	8	8	8
l_3	2	2	2	3	3	3	3	3	3	3	3	3	3	3
l_1														
30	●													
40	●	●	●											
50	●	●	●	●										
60	●	●	●	●										
80	●	●	●	●		●								
90						●								
100		●	●	●	●	●	●	●	●					
112					●	●	●	●	●	●				
125			●	●	●	●	●	●	●	●	●			
140			●	●	●	●	●	●	●	●	●	●		
160			●	●		●	●	●	●	●	●	●	●	
180						●	●	●	●	●	●	●	●	●
200						●	●	●	●	●	●	●	●	●
224						●	●	●	●	●	●	●	●	●
250						●	●	●	●	●	●	●	●	●
280						●	●	●	●	●	●	●	●	●
315						●	●	●	●	●	●	●	●	●
355						●	●	●	●	●	●	●	●	●
400						●	●	●	●	●	●	●	●	●
450								●	●	●	●	●	●	●
500								●	●	●	●	●	●	●
550									●	●	●	●	●	●
600										●	●	●	●	●
700											●	●	●	●
800												●	●	●

Ordering Code (example):

Guide pillar DIN 9825/ISO 9182-2	=	202.19.
Guide diameter d_1	25 mm =	025.
Length l_1	224 mm =	224.
Classification TOL	yellow =	10
Order No	=	202.19. 025.224.10