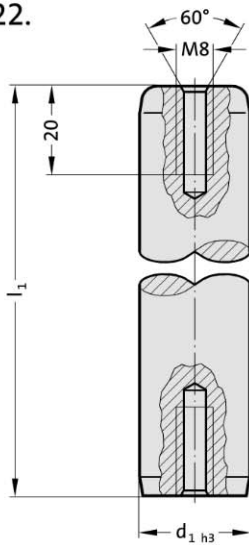
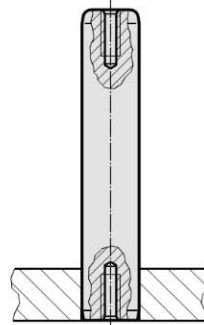


# Guide pillar with internal thread on both sides, ~DIN 9825/~ISO 9182-2

202.22.



Mounting example



**Material:**

Steel, (Core strength:  $\geq 900 \text{ N/mm}^2$ ) surface hardened  
Surface hardness: 60 + 3 HRC, Hardness penetration  $\geq 1,8 \text{ mm}$

**Execution:**

fine-ground and superfinished  
Method of manufacturing entails that centre holes are not concentric with O.D.

**Note:**

Bearing clearance / Preloading see pairing classification at the beginning of chapter D.  
Matching guide combinations, see selection matrix at the beginning of chapter D.  
Assembly guide lines / Dimensional requirements and tolerances at the end of chapter D.  
Tolerance range:  
yellow = .10  
green = .20  
red = .30



## 202.22. Guide pillar with internal thread on both sides, ~DIN 9825/~ISO 9182-2

$d_1$	15 16	19 20	24 25	30 32	38 40	48 50	60 63	80
$l_2$	4	4	6	6	6	8	8	8
$l_1$								
90	●							
100	●	●	●					
112	●	●	●					
125	●	●	●	●				
140	●	●	●	●				
160	●	●	●	●	●			
180	●	●	●	●	●	●		
200	●	●	●	●	●	●		
224	●	●	●	●	●	●		
250	●	●	●	●	●	●	●	
280	●	●	●	●	●	●	●	●
315	●	●	●	●	●	●	●	●
355	●	●	●	●	●	●	●	●
400		●	●	●	●	●	●	●
450			●	●	●	●	●	●
500			●	●	●	●	●	●
550				●	●	●	●	●
600					●	●	●	●
700					●	●	●	●
800					●	●	●	●

**Ordering Code (example):**

Guide pillar with internal thread on both sides, ~DIN 9825/~ISO 9182-2	=202.22.
Guide diameter $d_1$	32 mm = 032.
Length $l_1$	200 mm = 200.
Classification TOL	yellow = 10
Order No	=202.22. 032.200.10