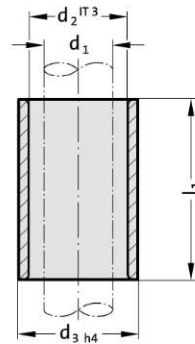


## Guide bush for ball bearing, for highest stroking speed Guide bush for ball bearing, ISO 9448-3



2062.44.012.



**Material:**

Tool steel, hardened  $62 \pm 2$  HRC

**Execution:**

Bearing surfaces honed,  
outside diameter precision ground.

**Note:**

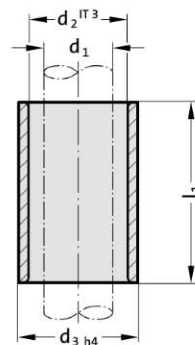
For use with ball cage 206.41. and guide pillar 202.61.

2062.44.012. Guide bush for ball bearing,  
for highest stroking speed

Order No	d <sub>1</sub>	d <sub>2</sub>	d <sub>3</sub>	l <sub>1</sub>	for ball∅
2062.44.012.016.032	12	16	20	32	2
2062.44.012.017.032	12	17	20	32	2.5



2061.44.015.



**Material:**

Tool steel, hardened  $62 \pm 2$  HRC

**Execution:**

Bearing surfaces honed,  
outside diameter precision ground.

**Note:**

For use with ball cage 206.41. and guide pillar 202.61.

Tolerance range:

yellow = .10

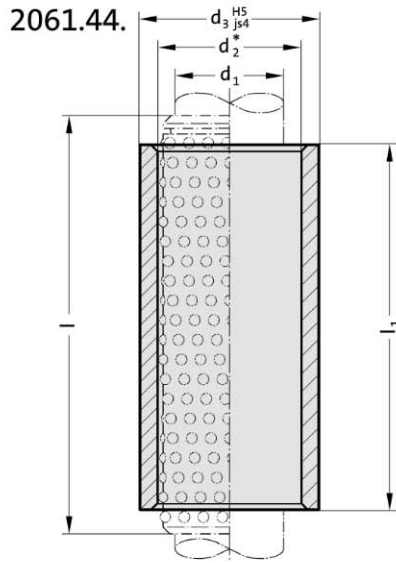
green = .20

2061.44. Guide bush for ball bearing,  
ISO 9448-3

Order No	d <sub>1</sub>	d <sub>2</sub>	d <sub>3</sub>	l <sub>1</sub>
2061.44.015.023.10	15	21	28	23
2061.44.015.023.20	15	21	28	23
2061.44.015.023.30	15	21	28	23
2061.44.015.030.10	15	21	28	30
2061.44.015.030.20	15	21	28	30
2061.44.015.030.30	15	21	28	30
2061.44.015.037.10	15	21	28	37
2061.44.015.037.20	15	21	28	37
2061.44.015.037.30	15	21	28	37
2061.44.015.047.10	15	21	28	47
2061.44.015.047.20	15	21	28	47
2061.44.015.047.30	15	21	28	47
2061.44.015.060.10	15	21	28	60
2061.44.015.060.20	15	21	28	60
2061.44.015.060.30	15	21	28	60



# Guide bush for ball bearing, ISO 9448-3



### Material:

Tool steel, hardened 62 ± 2 HRC

### Execution:

Bearing surfaces honed, outside diameter precision ground.

### Slip-Fit Bonding:

The position of the bearing is given by push fit holes tolerance H5. The adhesive (order no. 281.648) provides optimum push retention whilst offering the following **advantages:**

- high accuracy and stiffness
- no problems to find position when changing bushings

We do not recommend to press fit for the same reasons mentioned above.

### Note:

Notes on ball bearing type guides at the beginning of chapter D.

\* Preloading see pairing classification at the beginning of chapter D

Matching guide combinations, see selection matrix at the beginning of chapter D.

Assembly guide lines / Dimensional requirements and tolerances at the end of chapter D.

Ø 8 - Ø 12 not available in tolerance range red = .30.

Tolerance range:

yellow = .10

green = .20

red = .30

## 2061.44. Guide bush for ball bearing, ISO 9448-3

d <sub>1</sub>	8	10	11	12	15	16	19	20	24	25	30	32	38	40	48	50	60	63	80			
d <sub>2</sub>	11	14	15	16	21	22	25	26	30	31	38	40	46	48	56	58	68	71	92			
d <sub>3</sub>	18	22	22	22	28	28	32	32	40	40	48	48	58	58	70	70	85	85	105			
l <sub>1</sub> / l*																						
30 / 40	●	●	●	●																		
23 / 40		●	●	●																		
37 / 40		●	●	●																		
23 / 45					●	●	●	●	●	●	●	●	●	●	●	●						
30 / 45					●	●	●	●	●	●	●	●	●	●	●	●	●					
37 / 45					●	●	●	●	●	●	●	●	●	●	●	●	●					
47 / 56					●	●	●	●	●	●	●	●	●	●	●	●	●					
60 / 71					●	●	●	●	●	●	●	●	●	●	●	●	●	●	●	●		
77 / 95							●	●	●	●	●	●	●	●	●	●	●	●	●	●		
37 / 50													●	●	●	●	●	●	●	●	●	
95 / 120													●	●	●	●	●	●	●	●	●	
47 / 63													●	●	●	●	●	●	●	●	●	
60 / 80													●	●	●	●	●	●	●	●	●	
120 / 140													●	●	●	●	●	●	●	●	●	●
60 / 95																	●	●	●	●	●	

\*l = Nominal ordering length of ball cage - preferred length

### Ordering Code (example):

Guide bush for ball bearing, ISO 9448-3	=2061.44.
Guide diameter d <sub>1</sub>	25 mm = 025.
Installation length l <sub>1</sub>	23 mm = 023.
Classification TOL	yellow = 10
Order No	=2061.44.025.023.10

