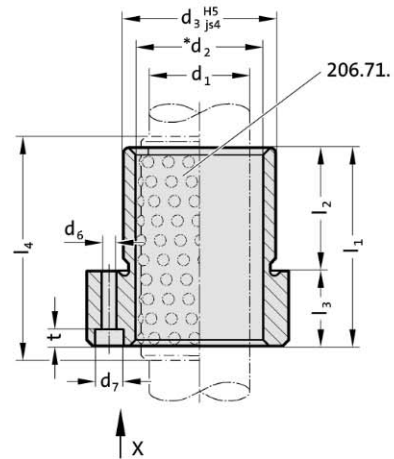
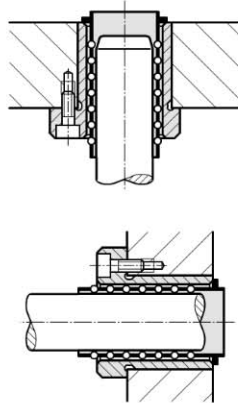




Mounting example

2091.45.



Material:

Tool steel, hardened 62 ± 2 HRC

Execution:

Bearing surfaces honed.

Diameter d_3 and collar face precision ground.

Note:

The guide bush is fixed by means of 3 screws up to $\phi 16$: with screws to DIN 6912, from $\phi 19$: with screws to DIN EN ISO 4762.

The screws are not contained in the scope of delivery.

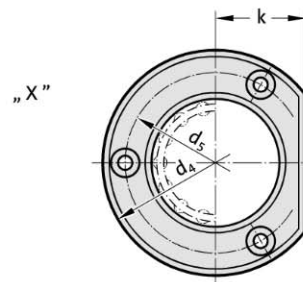
Notes on ball bearing type guides at the beginning of chapter D.

*Preloading see pairing classification at the beginning of chapter D

Matching guide combinations, see selection matrix at the beginning of chapter D.

Ball guide capacity calculations at the end of chapter D.

Assembly guide lines / Dimensional requirements and tolerances at the end of chapter D.



Tolerance range:

yellow = .10

green = .20

red = .30

2091.45. Flanged guide bush for ball bearing, ISO 9448-5

d_1	15 16	19 20	24 25	30 32	38 40	48 50	60 63
d_2	21 22	25 26	30 31	38 40	46 48	56 58	68 71
d_3	28	32	40	48	58	70	85
d_4	45	50	63	72	85	104	120
d_5	35	40	50	58	70	86	100
d_6	4.5	4.5	5.5	5.5	6.6	9	9
d_7	8	8	10	10	11	15	15
k	15	18	23	28	33	38	46
l_1	36	45	55	62	67	89	89
l_2	30	30	30	37	37	47	47
l_3	6	15	25	25	30	42	42
t	3.4	4.6	5.7	5.7	6.8	9	9
l_4^*	45	56	71	71	80	95	95

* l_4 = Nominal ordering length of ball cage - preferred length

Ordering Code (example):

Flanged guide bush for ball bearing, ISO 9448-5 =2091.45.

Guide diameter d_1 32 mm = 032.

Classification TOL yellow = 10

Order No =2091.45.032.10