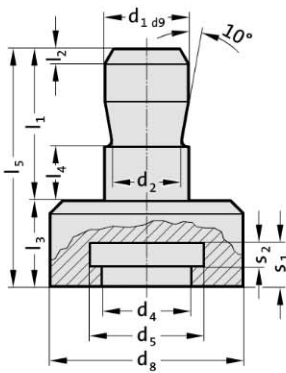


Spigot holder  
Screw-in lifter stud VDI 3366

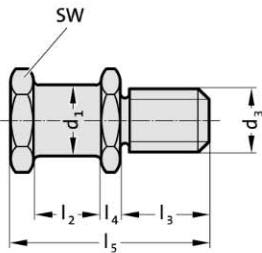
212.16.



212.16. Spigot holder

Order No	Work area										
	d <sub>1</sub>	d <sub>2</sub>	d <sub>4</sub>	d <sub>5</sub>	d <sub>8</sub>	l <sub>1</sub>	l <sub>2</sub>	l <sub>3</sub>	l <sub>4</sub>	s <sub>1</sub>	s <sub>2</sub>
212.16.025	25	20	26	33	56	45	4	25	16	12.6	7
212.16.032	32	25	33	49	80	56	4	30	16	18.6	10
212.16.040	40	32	33	49	80	70	5	30	26	18.6	10

213.12. VDI 3366



213.12. Screw-in lifter stud VDI 3366

Order No	d <sub>1</sub>	d <sub>3</sub>	l <sub>2</sub>	l <sub>3</sub>	l <sub>4</sub>	l <sub>5</sub>	SW*	Lifting capacity [kg]
213.12.016	16	M16	20	28	5	58	24	320
213.12.020	20	M20	22	34	6	68	30	500
213.12.024	25	M24	25	38	8	78	36	1000
213.12.030	32	M30	32	45	10	95	41	1500
213.12.036	40	M36	40	56	12	118	50	2500

\*SW = Width across flats