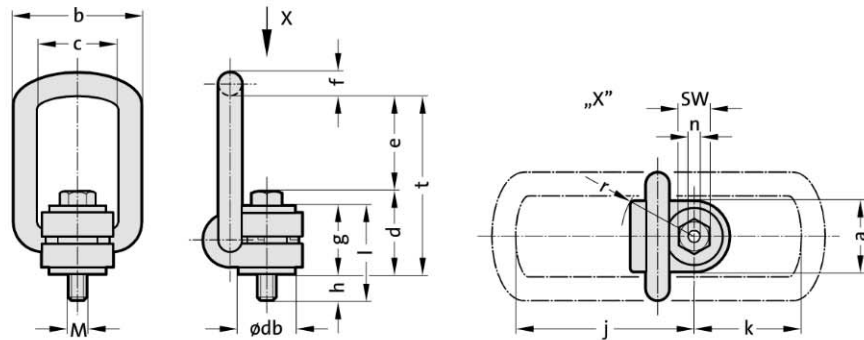


Hoisting snap link, omnidirectional



2131.15.



Description:

The hinged unit is free to rotate through 360°, self-align with the direction of pull and folding. The hoisting Snap Link must be installed in the stress direction before loading, must be able to move freely and may not be supported at an angle.

Do not rotate under load.

Full load bearing capacity in any direction.

Complete with a 100% crack-checked outer and inner hexagonal bolt for universal tool use.

Note:

Ensure that the bolting surface is flat. Thread must be screwed in completely.

2131.15. Hoisting snap link, omnidirectional

Order No	a	b max.	c	d	e	f	g	h Standard	j	k	l Standard	M	n	SW*	R	t	db	Tightening torque [Nm]
2131.15.008.036	30	54	34	35	40	10	29	11	75	45	40	M8	5	13	32	75	24	30
2131.15.010.036	30	54	34	36	39	10	29	16	75	45	45	M10	6	17	32	75	24	60
2131.15.012.036	32	54	34	37	38	10	29	21	75	45	50	M12	8	19	32	75	26	100
2131.15.016.036	33	56	36	46	39	13.5	36	24	86	47	60	M16	10	24	38	85	30	150
2131.15.020.050	50	82	54	55	55	16.5	43	32	113	64	75	M20	12	30	48	110	45	250
2131.15.024.050	50	82	54	58	67	18	43	37	130	78	80	M24	14	36	48	125	45	400
2131.15.027.065	60	103	65	78	69	22.5	61	39	151	80	100	M27	0	41	67	147	60	400
2131.15.030.065	60	103	65	80	67	22.5	61	49	151	80	110	M30	17	46	67	147	60	500
2131.15.036.065	60	103	65	72	74	22.5	55	52	151	80	107	M36	0	55	67	146	60	700
2131.15.036.080	77	122	82	100	97	26.5	77	63	205	110	140	M36	22	55	87	197	70	800
2131.15.042.080	77	122	82	103	94	26.5	77	73	205	110	150	M42	24	65	87	197	70	1000
2131.15.042.100	95	156	100	113	109	36	87	63	230	130	150	M42	24	65	100	222	85	1500
2131.15.048.100	95	156	100	117	105	36	87	73	230	130	160	M48	27	75	100	222	85	2000

*SW = Width across flats

Max. carried load "G" in tonnes for various types of attachment

Type of attachment, Arrangement of the suspension points												
Number of lines	1	1	2	2	2 symmetrical		2 asymmetrical		3 and 4 symmetrical		3 and 4 asymmetrical	
Angle of inclination/ load direction	0°	90°	0°	90°	0-45°	45-60°	asymmetrical		0-45°	45-60°	asymmetrical	
Order No	Thread		carried load in tonnes									
2131.15.008.036	M 8	0,3	0,3	0,6	0,6	0,42	0,3	0,3	0,63	0,45	0,3	0,3
2131.15.010.036	M10	0,63	0,63	1,26	1,26	0,88	0,63	0,63	1,32	0,95	0,63	0,63
2131.15.012.036	M12	1,0	1,0	2,0	2,0	1,4	1,0	1,0	2,1	1,5	1,0	1,0
2131.15.016.036	M16	1,5	1,5	3,0	3,0	2,1	1,5	1,5	3,15	2,25	1,5	1,5
2131.15.020.050	M20	2,5	2,5	5,0	5,0	3,5	2,5	2,5	5,25	3,75	2,5	2,5
2131.15.024.050	M24	4,0	4,0	8,0	8,0	5,6	4,0	4,0	8,4	6,0	4,0	4,0
2131.15.027.065	M27	4,0	4,0	8,0	8,0	5,6	4,0	4,0	8,4	6,0	4,0	4,0
2131.15.030.065	M30	5,0	5,0	10,0	10,0	7,0	5,0	5,0	10,5	7,5	5,0	5,0
2131.15.036.065	M36	7,0	7,0	14,0	14,0	9,8	7,0	7,0	14,7	10,5	7,0	7,0
2131.15.036.080	M36	8,0	8,0	16,0	16,0	11,2	8,0	8,0	16,8	12,0	8,0	8,0
2131.15.042.080	M42	10,0	10,0	20,0	20,0	14,0	10,0	10,0	21,0	15,0	10,0	10,0
2131.15.042.100	M42	15,0	15,0	30,0	30,0	21,0	15,0	15,0	31,5	22,5	15,0	15,0
2131.15.048.100	M48	20,0	20,0	40,0	40,0	28,0	20,0	20,0	42,0	30,0	20,0	20,0