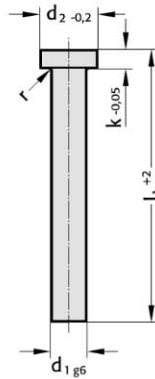


Ejector pin, hardened, DIN ISO 6751



237.1.



Material:

WS
 Order No **237.1**.
 Hardness:
 Shaft 60 ± 2 HRC
 Head 45 ± 5 HRC

Description of FIBRO materials for tool and die components see at the beginning of Chapter E.

Execution:

Shank hardened and precision ground.
 Head hot upset-forged.

237.1. Ejector pin, hardened, DIN ISO 6751

d ₁	d ₂	k	r	l ₁	l ₁	l ₁	l ₁	l ₁	l ₁	l ₁	l ₁	l ₁	l ₁	l ₁
1	2.5	1.2	0.2	●	●	●	●	●	●	●				
1.1	2.5	1.2	0.2	●	●	●	●	●	●	●				
1.2	2.5	1.2	0.2	●	●	●	●	●	●	●				
1.3	3	1.5	0.2	●	●	●	●	●	●	●				
1.4	3	1.5	0.2	●	●	●	●	●	●	●				
1.5	3	1.5	0.2	●	●	●	●	●	●	●				
1.6	3	1.5	0.2	●	●	●	●	●	●	●				
1.7	3	1.5	0.2	●	●	●	●	●	●	●				
1.8	3	1.5	0.2	●	●	●	●	●	●	●				
1.9	3	1.5	0.2	●	●	●	●	●	●	●				
2	4	2	0.2	●	●	●	●	●	●	●		●	●	
2.2	4	2	0.2	●	●	●	●	●	●	●		●	●	
2.5	5	2	0.3	●	●	●	●	●	●	●		●	●	
2.7	5	2	0.3	●	●	●	●	●	●	●		●	●	
3	6	3	0.3	●	●	●	●	●	●	●		●	●	●
3.2	6	3	0.3	●	●	●	●	●	●	●		●	●	●
3.5	7	3	0.3	●	●	●	●	●	●	●		●	●	●
3.7	7	3	0.3	●	●	●	●	●	●	●		●	●	●
4	8	3	0.3	●	●	●	●	●	●	●		●	●	●
4.2	8	3	0.3	●	●	●	●	●	●	●		●	●	●
4.5	8	3	0.3	●	●	●	●	●	●	●		●	●	●

Ordering Code (example):

Ejector pin, hardened, DIN ISO 6751	=	237.1 .
Shank diameter d ₁	5 mm =	0500.
Length l ₁	40 mm =	040
Order No	=	237.1 .0500.040



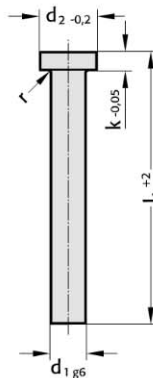
Ejector pin, hardened, DIN ISO 6751

Material: 237.1.

WS
Order No **237.1**.
Hardness:
Shaft 60 ± 2 HRC
Head 45 ± 5 HRC

Description of FIBRO materials for tool and die components see at the beginning of Chapter E.

Execution:
Shank hardened and precision ground.
Head hot upset-forged.



237.1. Ejector pin, hardened, DIN ISO 6751

d ₁	d ₂	k	r	l ₁	l ₁	l ₁	l ₁	l ₁	l ₁	l ₁	l ₁	l ₁	l ₁	l ₁	l ₁	l ₁	l ₁	l ₁		
				40	63	80	100	125	160	200	250	315	400	500	630	800	1000	1250	1600	
4.7	8	3	0.3																	
5	10	3	0.3	●	●	●	●	●	●	●	●	●	●	●	●	●				
5.2	10	3	0.3				●	●	●	●	●	●	●	●						
5.5	10	3	0.3				●	●	●	●	●	●	●	●						
6	12	5	0.5	●	●	●	●	●	●	●	●	●	●	●	●	●				
6.2	12	5	0.5				●	●	●	●	●	●	●	●	●					
6.5	12	5	0.5				●	●	●	●	●	●	●	●						
7	12	5	0.5				●	●	●	●	●	●	●	●	●					
8	14	5	0.5		●	●	●	●	●	●	●	●	●	●	●	●	●	●	●	●
8.2	14	5	0.5				●	●	●	●	●	●	●	●	●	●				
8.5	14	5	0.5				●	●	●	●	●	●	●	●	●					
9	14	5	0.5				●	●	●	●	●	●	●	●	●					
10	16	5	0.5			●	●	●	●	●	●	●	●	●	●	●	●	●	●	●
10.2	16	5	0.5				●	●	●	●	●	●	●	●	●					
10.5	16	5	0.5				●	●	●	●	●	●	●	●	●					
11	16	5	0.5				●	●	●	●	●	●	●	●	●					
12	18	7	0.8			●	●	●	●	●	●	●	●	●	●	●	●	●	●	●
12.2	18	7	0.8				●	●	●	●	●	●	●	●	●					
12.5	18	7	0.8				●	●	●	●	●	●	●	●	●					
14	22	7	0.8			●	●	●	●	●	●	●	●	●	●	●	●	●	●	●
16	22	7	0.8				●	●	●	●	●	●	●	●	●	●	●	●	●	●
18	24	7	0.8				●	●	●	●	●	●	●	●	●	●	●	●	●	●
20	26	8	1					●	●	●	●	●	●	●	●	●	●	●	●	●

Ordering Code (example):

Ejector pin, hardened, DIN ISO 6751 = **237.1**.

Shank diameter d₁ 5 mm = 0500.

Length l₁ 40 mm = 040

Order No = **237.1**.0500.040