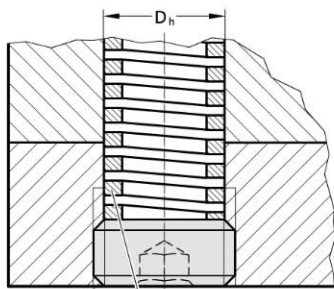
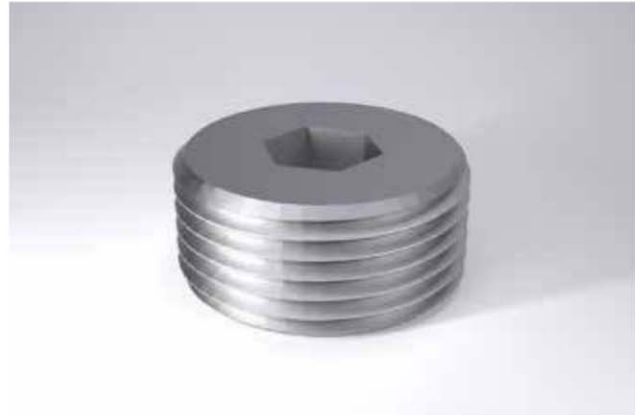
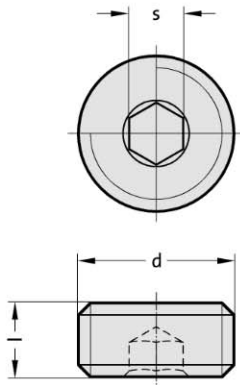




# Compression spring set screw

241.00.1.



secured with  
LOCTITE  
Type 281.243

compression spring to separate  
order - see High Performance  
Compression Springs

### Description:

These set screws can be used as adjustable spring stops. They are available for all customary spring sizes from Ø 10 to Ø 40. The set screws are suitable for springs 241.14. to .17.

Their use offers the following advantages:

- Adjustable spring tension from under the bottom bolster, without any dismantling.
- Exchange of springs without dismantling.
- Through-holes instead of blind holes for spring accommodation.

### Ordering Code (example):

Compression spring set screw	= 241.00.1.
d 22 mm	= 22
Order No	= 241.00.1.22

## 241.00.1. Compression spring set screw

d	M12x1,5	M14x1,5	M18x1,5	M22x1,5	M28x1,5	M35x1,5	M42x1,5
l	10	10	10	10	12	12	12
s	6	6	8	8	10	10	10
Spring Ø	10	12.5	16	20	25	32	40
D <sub>h</sub>	10.5	12.5	16.5	20.5	26.5	33.5	40.5