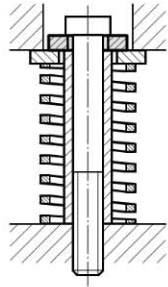


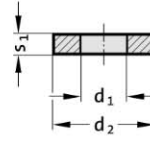
Disc Spacer sleeve



Mounting example



244.10.



Material:
C 45 heat treated



Ordering Code (example):

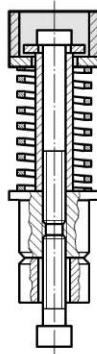
Disc		= 244.10.
Inside diameter d_1	17 mm =	170.
External diameter d_2	38 mm =	38.
Thickness s_1	6 mm =	06
Order No		= 244.10. 170. 38. 06

244.10. Disc

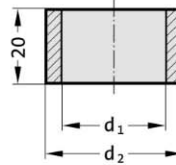
d_1	d_2	s_1	d_1	d_2	s_1	d_1	d_2	s_1	d_1	d_2	s_1
6.4	17	3	13	30	5	17	40	6	25	46	10
8.4	17	3	13	35	5	17	50	6	25	55	10
8.4	23	4	13	30	6	17	58	10	25	56	10
8.5	20	4	13	46	8	20.4	30	5	25	70	10
9	26	4	13.4	23	4	21	42	8	26	58	6
10.5	25	4	16.4	26	4	21	44	8	26	80	12
10.5	25	5	17	35	4	21	45	8	31	68	8
10.5	26	4	17	35	6	21	45	16	31	68	10
10.5	28	4	17	36	4	21	46	6	32	92	15
10.5	30	5	17	36	13	21	49	6	37	80	8
11	36	6	17	37	6	21	65	8	43	92	8
12.5	28	4	17	38	6	22	68	12			



Mounting example



244.11.



Material:
St 35.4 case-hardened



Ordering Code (example):

Spacer sleeve		= 244.11.
Order code Diameter	40 mm =	40
Order No		= 244.11. 40

244.11. Spacer sleeve

Spring-Ø	20 25	32 40
d_1	20	30
d_2	25	38
Order code	25	40