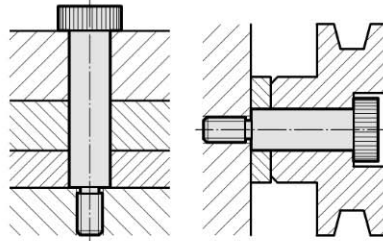
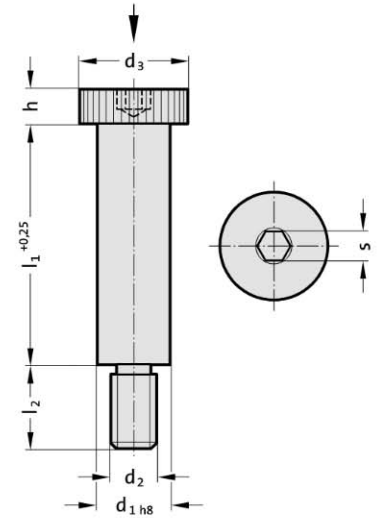




Mounting example



244.17.



Material:

High tensile steel,
heat treated to 12.9 ISO 898-1.

Execution:

d_1 ground,
heads knurled.

244.17. Shoulder screw

d_1	6	8	10	12	16	20	24
d_2	M5	M6	M8	M10	M12	M16	M20
Tightening torque [Nm]	7	13	32	65	120	290	500
d_3	10	13	16	18	24	30	36
h	4.5	5.5	7	9	11	14	16
s	3	4	5	6	8	10	12
l_2	9.5	11	13	16	18	22	27
l_1							
10	●	●					
12	●	●					
16	●	●		●			
20	●	●	●	●			
25	●	●	●	●	●		
30	●	●	●	●	●	●	
35	●	●	●	●	●	●	
40	●	●	●	●	●	●	●
45			●	●	●	●	●
50		●		●	●	●	●
55			●	●	●	●	●
60			●	●	●	●	●
65			●	●	●	●	●
70			●	●	●	●	●
80			●	●	●	●	●
90				●	●	●	●
100				●	●	●	●
120					●	●	●

Ordering Code (example):

Shoulder screw	=244.17.
Nominal diameter d_1 12 mm =	120.
Guide length l_1 55 mm =	055
Order No	=244.17. 120.055