

Precision Guide Bushes for Punches
DIN 9845, Shape C
ISO 8978

FIBRO

262.
2621.



Material:

262.
Case hardened steel
Order No. 262.1.
Hardness 740 ± 40 HV 10

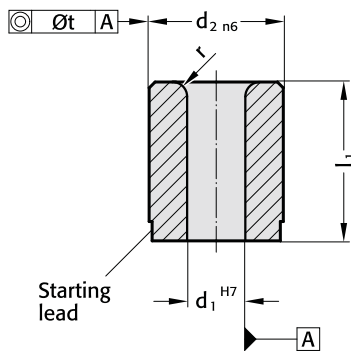
2621.
WS, hardened
Order No 2621.1.
Hardness HRC 60 ± 2

Execution:

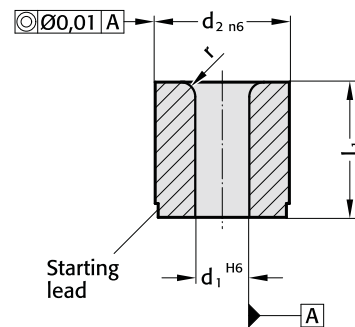
Diameters d_1 , d_2 and starting lead ground.

Description of FIBRO materials for die components:
pages E 10–E 11.

262. Shape C DIN 9845



2621. ISO 8978



262.

d_1	Diameter steps	d_2	t	l_1	r
0,5– 1,0	0,1	5	0,01	9	1
1,1– 2,0		6		12	
2,1– 3,0		7			
3,1– 4,0		8			
4,1– 5,0		10		16	
5,1– 6,0		12	0,02		1,5
6,1– 8,0		15		20	
8,1–10,0		18			2
10,1–12,0		22		28	
12,1–15,0		26			
15,1–18,0	0,5	30		36	

Other diameters on request.

Ordering Code (example):

Guide Bush for punches DIN 9845 = 262.
Material case hardened steel = 1.
 $d_1 = \varnothing 2,4$ mm = 0240.
 $l_1 = 12$ mm = 012
Order No = 262.1.0240.012

2621.

d_1	Diameter steps	d_2	l_1	r
1,0– 2,4	0,1	5	8	1
1,6– 3,0		6	12,5	1
2,0– 3,5		8	12,5	1,5
3,0– 5,0		10	16	2
4,0– 7,2		13	16	2
6,0– 8,8		16	20	2
7,5–11,3		20	20	2,5
11,0–16,6		25	25	2,5
15,0–20,0	0,5	32	25	4
18,0–27,0		40	32	4
26,0–36,0		50	40	4

Ordering Code (example):

Guide Bush for punches ISO 8978 = 2621.
Material WS = 1.
 $d_1 = \varnothing 2,0$ mm = 0200.
 $d_2 = \varnothing 6$ mm = 0600
Order No = 2621.1.0200.0600