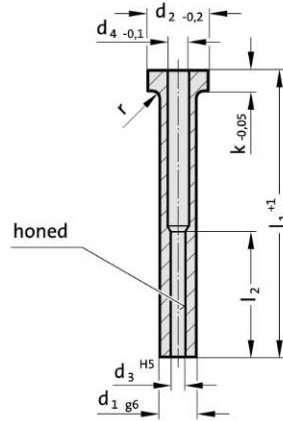


Ejector sleeve, hardened, DIN ISO 8405



264.1.



Material:

WS
 Order No **264.1.**
 Hardness:
 Shaft 60 ± 2 HRC
 Head 45 ± 5 HRC

Description of FIBRO materials for tool and die components see at the beginning of Chapter E.

Execution:

Shank hardened and precision ground.
 Head hot upset-forged.
 Guide bore precision ground and honed.

264.1. Ejector sleeve, hardened, DIN ISO 8405

d ₁	d ₃	d ₄	d ₂	k	r	l ₂	l ₁	l ₁	l ₁	l ₁	l ₁	l ₁	l ₁	l ₁	l ₁	l ₁	l ₁	l ₁	
							70	75	80	90	100	125	150	175	200	225	250	275	
2.5	1.25	1.6	5	2	0.3	20	●		●		●								
3	1.5	1.8	6	3	0.3	35		●			●								
3	1.6	1.9	6	3	0.3	35		●			●			●					
4	2	2.4	8	3	0.3	35		●			●			●					
4	2.2	2.4	8	3	0.3	35		●			●			●					
5	2.5	3	10	3	0.3	35		●			●			●					
5	2.7	3	10	3	0.3	45		●			●			●					
5	3	3.3	10	3	0.3	45		●			●			●					●
5	3.2	3.5	10	3	0.3	45		●			●			●					●
6	3.5	4	12	5	0.5	45		●			●			●					●
6	3.7	4	12	5	0.5	45		●			●			●					●
6	4	4.3	12	5	0.5	45		●			●			●					●
8	4.2	5	14	5	0.5	45		●			●			●					●
8	5	5.3	14	5	0.5	45		●			●			●					●
8	5.2	5.5	14	5	0.5	45		●			●			●					●
10	6	6.3	16	5	0.5	45		●			●			●					●
10	6.2	6.5	16	5	0.5	45		●			●			●					●
12	8	8.3	20	7	0.8	45		●			●			●					●
12	8.2	8.5	20	7	0.8	45		●			●			●					●
14	10	10.3	22	7	0.8	45		●			●			●					●
14	10.5	11	22	7	0.8	45		●			●			●					●
16	12	12.3	22	7	0.8	45		●			●			●					●
16	12.5	13	22	7	0.8	45		●			●			●					●

Ordering Code (example):

Ejector sleeve, hardened, DIN ISO 8405 = **264.1.**
 Diameter ejector pin d₃ 4 mm = 0400.
 Length l₁ 75 mm = 075
 Order No = **264.1.**0400.075