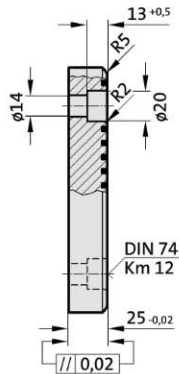


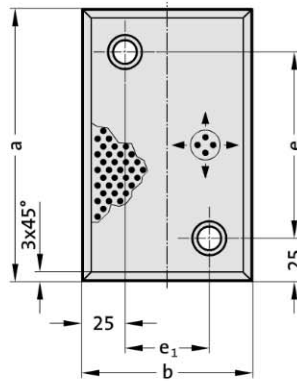


2960.76.

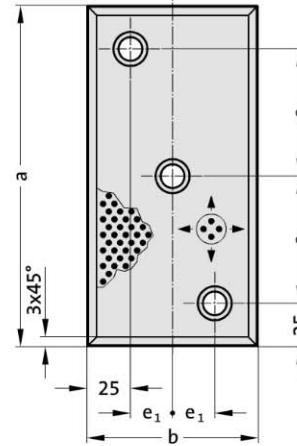
2960.76.



A



B



**Material:**

Bronze with solid lubricant, oilless lubricating

**Note:**

Screws not included.

**Fixing:**

Use socket cap screws  
DIN EN ISO 4762 M12.

**2960.76. Sliding pad, Bronze with solid lubricant**

Order No	Shape	b	a	e	e <sub>1</sub>	Number of screw holes
2960.76.080.100	A	80	100	50	30	2
2960.76.080.125	A	80	125	75	30	2
2960.76.080.160	A	80	160	110	30	2
2960.76.080.200	B	80	200	75	15	3
2960.76.100.125	A	100	125	75	50	2
2960.76.100.160	A	100	160	110	50	2
2960.76.100.200	B	100	200	75	25	3
2960.76.125.125	A	125	125	75	75	2