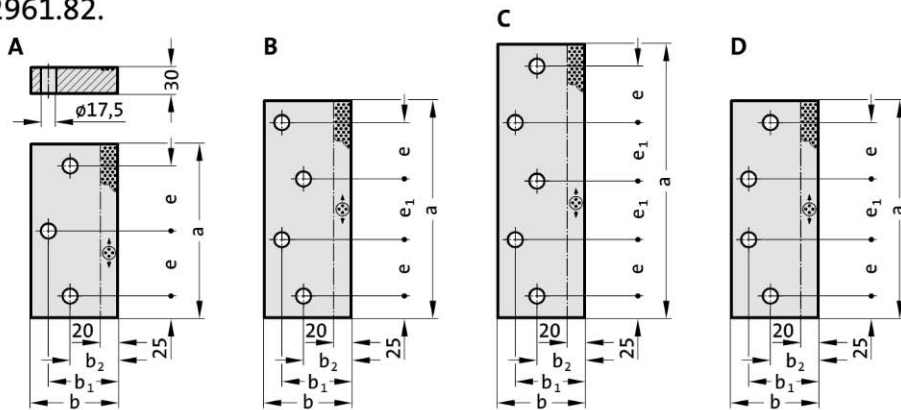
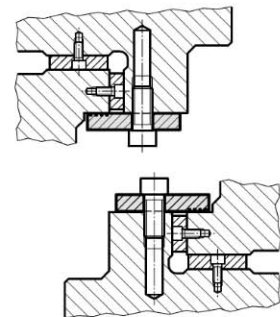




# Retaining plate, Steel with solid lubricant, NAAMS

**2961.82.****Mounting example****2961.82. Retaining plate, Steel with solid lubricant, NAAMS**

Order No	Shape	b	a	b <sub>1</sub>	b <sub>2</sub>	e	e <sub>1</sub>	Number of screw holes
2961.82.075.200	A	75	200	55	40	75	-	3
2961.82.075.250	B	75	250	55	40	65	70	4
2961.82.075.250.1	D	75	250	55	40	65	70	4
2961.82.075.250.2	A	75	250	55	40	100	-	3
2961.82.075.315	C	75	315	55	40	65	67.5	5
2961.82.075.350	C	75	350	55	40	75	75	5
2961.82.075.400	C	75	400	55	40	90	85	5
2961.82.075.450	C	75	450	55	40	100	100	5
2961.82.100.200	A	100	200	80	55	75	-	3
2961.82.100.250	B	100	250	80	55	65	70	4
2961.82.100.250.1	D	100	250	80	55	65	70	4
2961.82.100.250.2	A	100	250	80	55	100	-	3
2961.82.100.315	C	100	315	80	55	65	67.5	5
2961.82.100.350	C	100	350	80	55	75	75	5
2961.82.100.400	C	100	400	80	55	90	85	5
2961.82.100.450	C	100	450	80	55	100	100	5
2961.82.125.200	A	125	200	105	65	75	-	3
2961.82.125.250	B	125	250	105	65	65	70	4
2961.82.125.250.1	D	125	250	105	65	65	70	4
2961.82.125.250.2	A	125	250	105	65	100	-	3
2961.82.125.315	C	125	315	105	65	65	67.5	5
2961.82.125.350	C	125	350	105	65	75	75	5
2961.82.125.400	C	125	400	105	65	90	85	5
2961.82.125.450	C	125	450	105	65	100	100	5
2961.82.150.200	A	150	200	130	65	75	-	3
2961.82.150.250	B	150	250	130	65	65	70	4
2961.82.150.250.1	D	150	250	130	65	65	70	4
2961.82.150.250.2	A	150	250	130	65	100	-	3
2961.82.150.315	C	150	315	130	65	65	67.5	5
2961.82.150.350	C	150	350	130	65	75	75	5
2961.82.150.400	C	150	400	130	65	90	85	5
2961.82.150.450	C	150	450	130	65	100	100	5

**Material:**

Steel, surface hardened. Sliding faces with embedded solid lubricant.

**Note:**

Screws not included.

**Fixing:**Use socket cap screws  
DIN EN ISO 4762 M16.