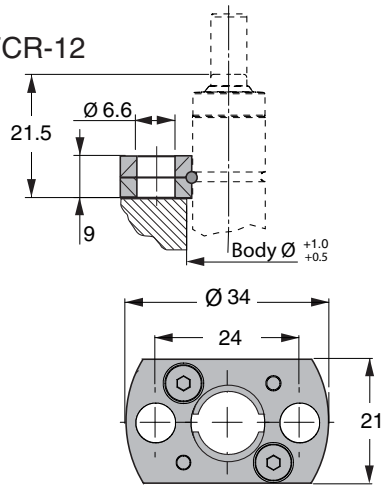
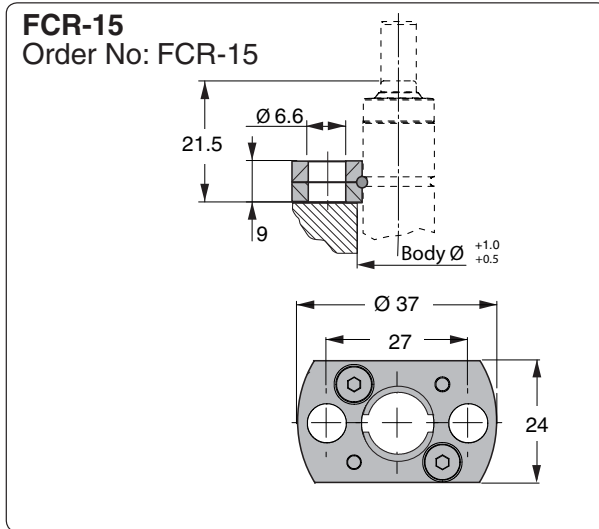


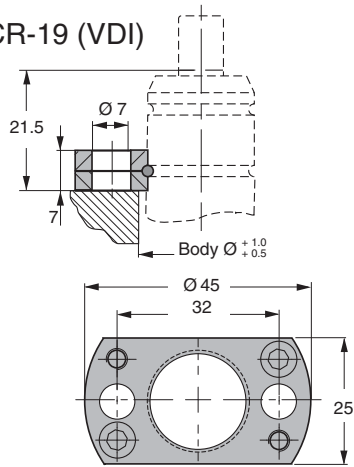
FCR-12
Order No: FCR-12





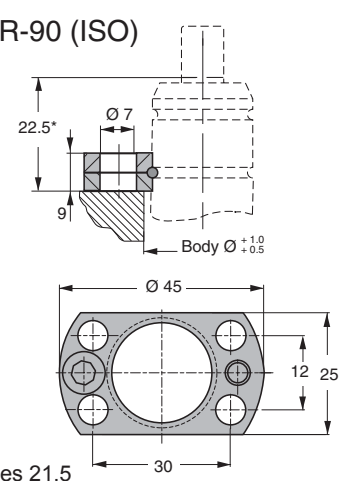
FCR-19

Order No: FCR-19 (VDI)



FCR-90

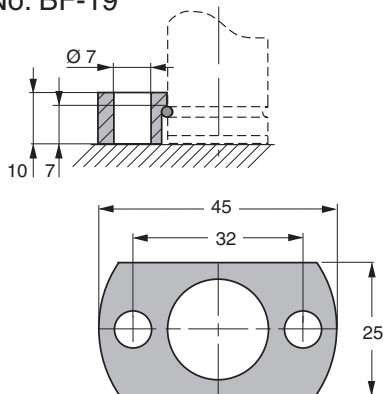
Order No: FCR-90 (ISO)



* **Note!** ISO Specifies 21.5

BF-19

Order No: BF-19



CU4 420 Mounts

FCR

Technical drawing of the FCR mount. The side view shows a cylindrical body with a central hole and two side holes. Dimensions include e (height of side holes), f (height of central hole), and e (height of bottom flange). The front view shows a rectangular shape with a central hole of diameter $\text{Ø } a$ and two side holes of diameter $\text{Ø } d$. Dimensions include b (width of side holes), c (width of body), g (height of side holes), and h (total height).

For model	Order No.	$\text{Ø } a$	b	c	$\text{Ø } d$	e	f
CU4 420	FCR-150	50	34	38	7	9	16

FC

Technical drawing of the FC mount. The side view shows a cylindrical body with a central hole and two side holes. Dimensions include e (height of side holes), f (height of central hole), and e (height of bottom flange). The front view shows a circular shape with a central hole of diameter $\text{Ø } a$ and two side holes of diameter $\text{Ø } d$. Dimensions include $\text{Ø } b$ (width of side holes), c (width of body), and $\text{Ø } d$ (diameter of side holes). A note indicates "Body $\text{Ø } \begin{smallmatrix} +1 \\ -0.5 \end{smallmatrix}$ ".

For model	Order No.	$\text{Ø } a$	$\text{Ø } b$	c	$\text{Ø } d$	e	f
CU4 420	FC-150	50	38	35	7	9	16