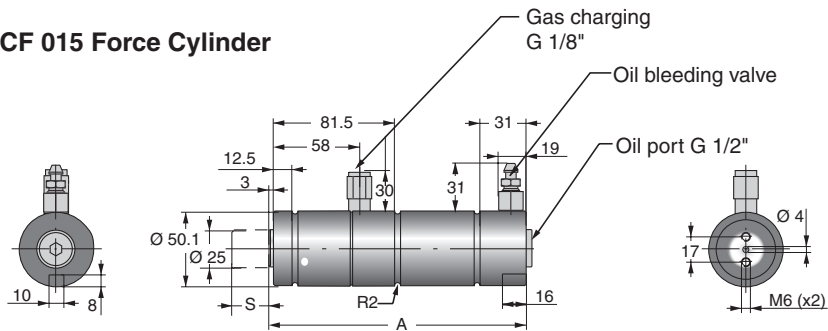


### HCF 015 Force Cylinder

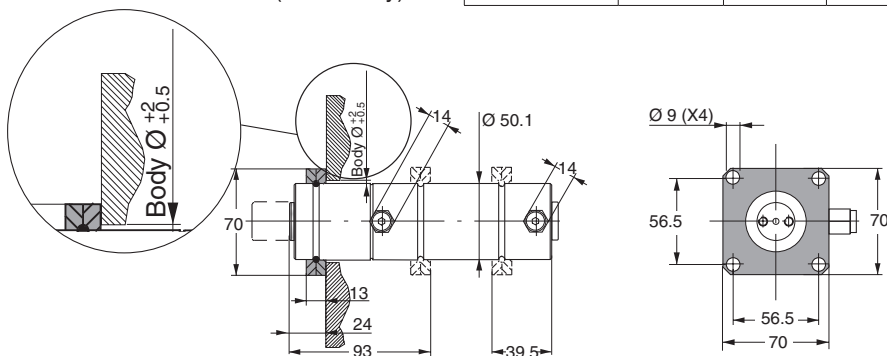


**Note:** External stop is recommended for the tool (5-10 mm above cylinder) to avoid high load on the cylinder during the return stroke. See picture on page 2.4.

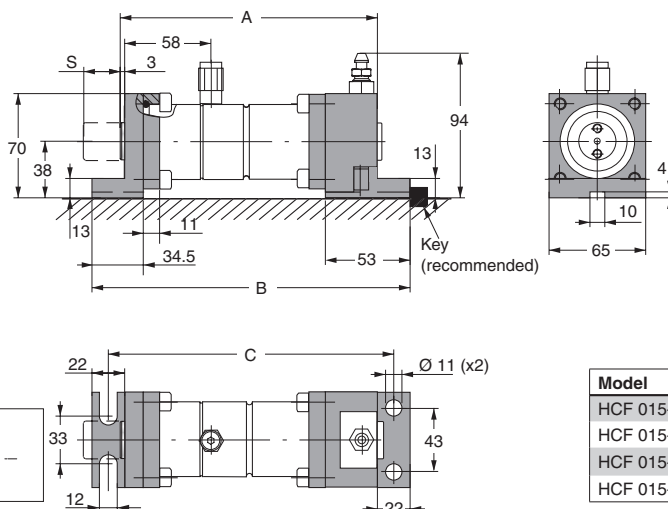
Order No.	Working force* (kN)	Return force (kN)	Stroke S (mm)	A	Weight (kg)
HCF 015-025	15	1.5	25	173	2.0
HCF 015-050	15	1.5	50	223	2.5
HCF 015-100	15	1.5	100	323	3.6
HCF 015-150	15	1.5	150	423	4.6

### Flange mount HCF 015

Order No. 2014677-0750 (Mount only)

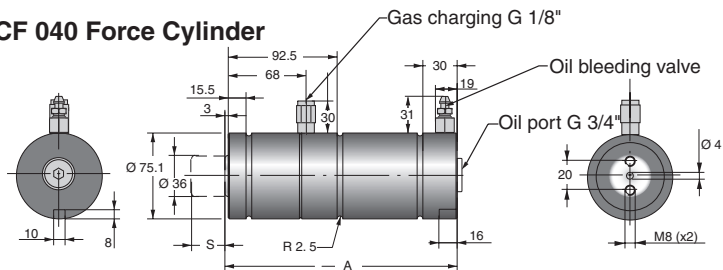


### Foot mount HCF 015 Order No. 3016977-015 (Mounts only)



Model	A	B	C
HCF 015-025	173	214	192
HCF 015-050	223	264	242
HCF 015-100	323	364	342
HCF 015-150	423	464	442

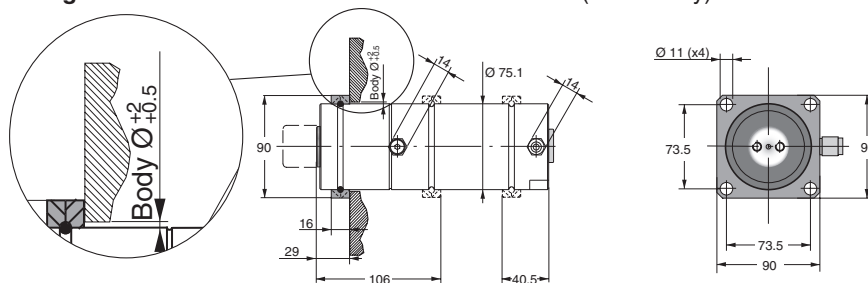
### HCF 040 Force Cylinder



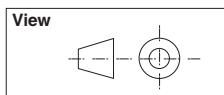
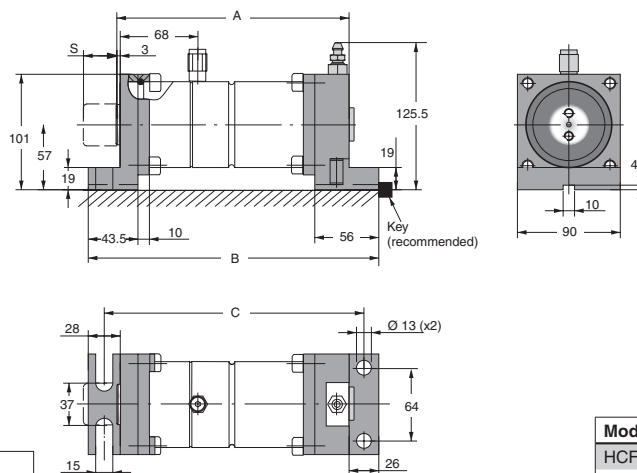
**Note:** External stop is recommended for the tool (5-10 mm above cylinder) to avoid high load on the cylinder during the return stroke. See picture on page 2.4.

Order No.	Working force* (kN)	Return force (kN)	Stroke S (mm)	A	Weight (kg)
HCF 040-025	40	4	25	195	5.5
HCF 040-050	40	4	50	245	6.5
HCF 040-100	40	4	100	345	8.6
HCF 040-150	40	4	150	445	10.7

### Flange mount for HCF 040 Order No. 2014677-1500 (Mount only)

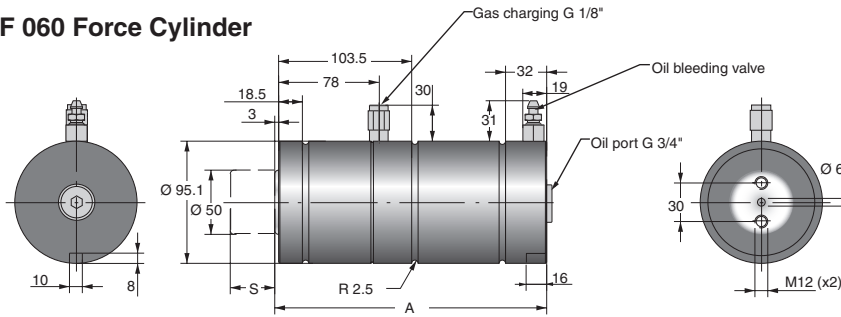


### Foot mount for HCF 040 Order No. 3016977-040 (Mounts only)



Model	A	B	C
HCF 040-025	195	246	219
HCF 040-050	245	296	269
HCF 040-100	345	396	369
HCF 040-150	445	496	469

### HCF 060 Force Cylinder



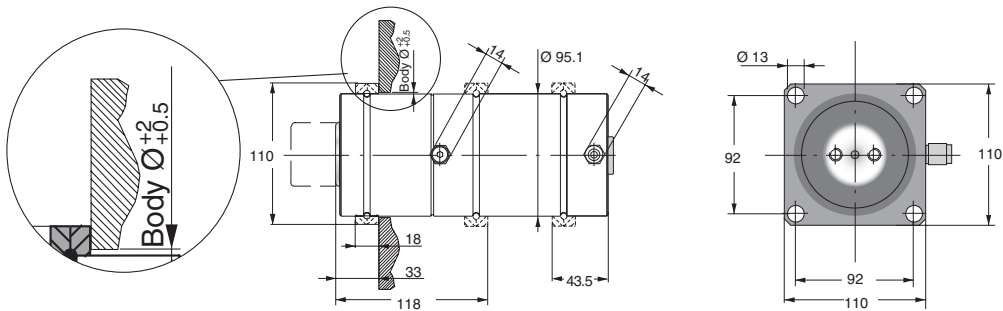
**Note:** External stop is recommended for the tool (5-10 mm above cylinder) to avoid high load on the cylinder during the return stroke. See picture on page 2.4.

Order No.	Working force* (kN)	Return force (kN)	Stroke S (mm)	A	Weight (kg)
HCF 060-025	60	6	25	211	9.8
HCF 060-050	60	6	50	261	11.6
HCF 060-100	60	6	100	361	15.1
HCF 060-150	60	6	150	461	18.6

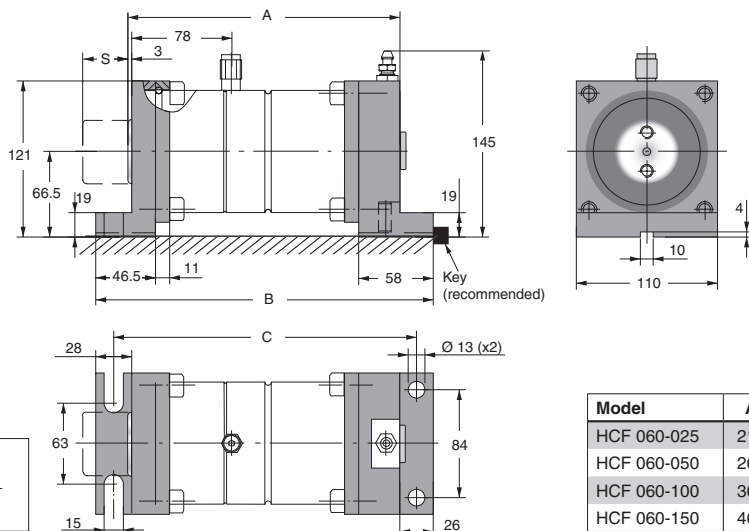
\* = Nominal force available for the operation

### Flange mount for HCF 060

Order No. 2014677-3000 (Mount only)

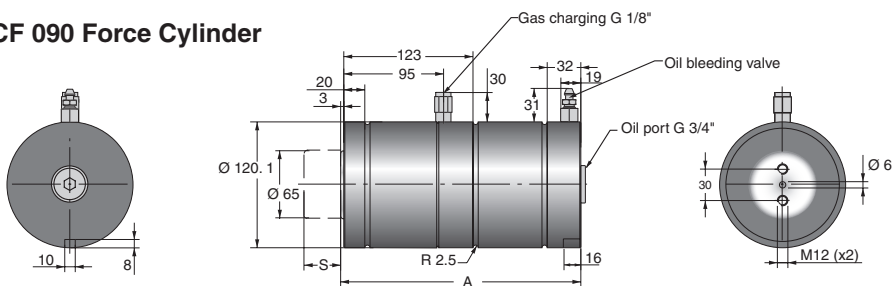


### Foot mount for HCF 060 Order No. 3016977-060 (Mounts only)



Model	A	B	C
HCF 060-025	211	262	235
HCF 060-050	261	312	285
HCF 060-100	361	412	385
HCF 060-150	461	512	485

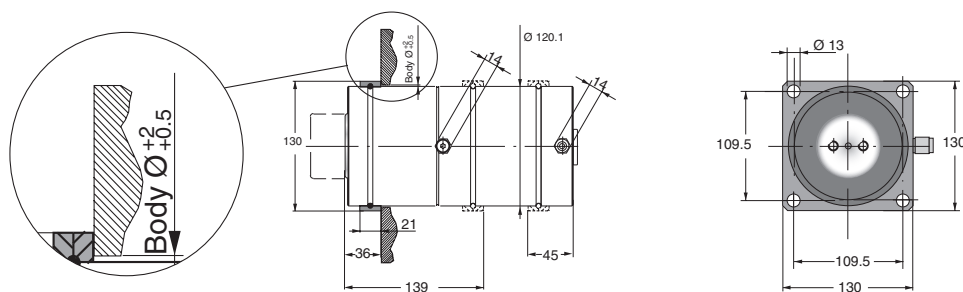
### HCF 090 Force Cylinder



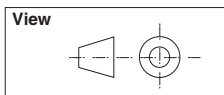
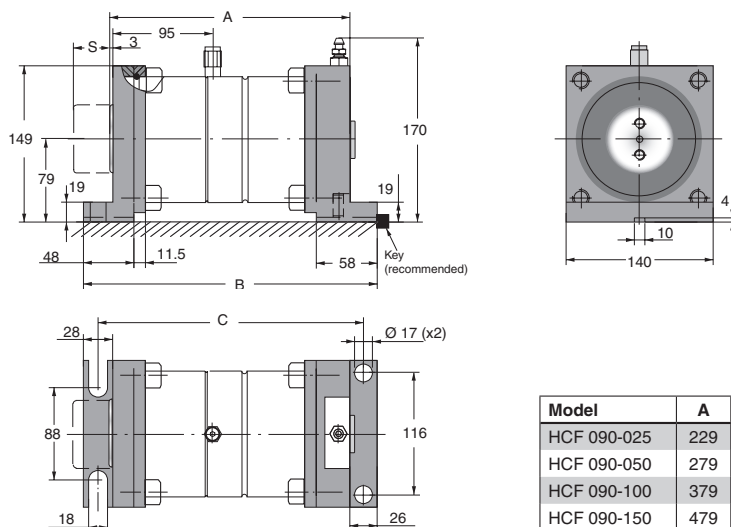
**Note:** External stop is recommended for the tool (5-10 mm above cylinder) to avoid high load on the cylinder during the return stroke. See picture on page 2.4.

Order No.	Working force* (kN)	Return force* (kN)	Stroke S (mm)	A	Weight (kg)
HCF 090-025	90	9	25	229	15.8
HCF 090-050	90	9	50	279	18.7
HCF 090-100	90	9	100	379	24.5
HCF 090-150	90	9	150	479	30.3

### Flange mount for HCF 090 Order No. 2014677-5000 (Mount only)



### Foot mount for HCF 090 Order No. 3016977-090 (Mounts only)



Model	A	B	C
HCF 090-025	229	280	254
HCF 090-050	279	330	304
HCF 090-100	379	430	404
HCF 090-150	479	530	504

