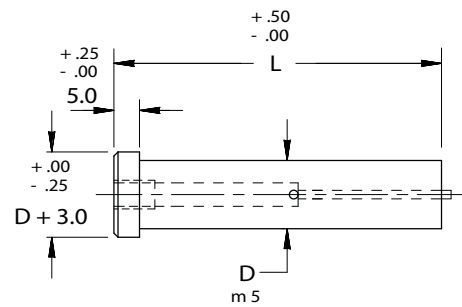
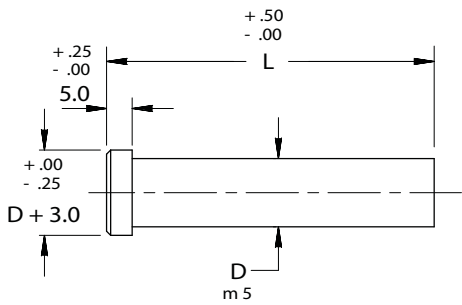


SHOULDER PUNCH BLANKS



SOLID/EJECTOR



Material

Steel: M2, HRC 60-63
Heads HRC 45-55

Complete design & CAD files visit WWW.MOELLERMCAD.COM

CATALOG NUMBER SOLID	SHANK DIA D	OVERALL LENGTH "L"																
		40	50	56	60	63	70	71	80	90	100	120	125	150	155	160	165	170
MSB 04	4	X	X	X	X	X	X	X	X	X	X	X						
MSB 05	5	X	X	X	X	X	X	X	X	X	X	X						
MSB 06	6		X	X	X	X	X	X	X	X	X	X						
MSB 08	8		X	X	X	X	X	X	X	X	X	X						
MSB 10	10		X	X	X	X	X	X	X	X	X	X						
MSB 13	13		X	X	X	X	X	X	X	X	X	X	X					
MSB 16	16		X	X	X	X	X	X	X	X	X	X	X	X				
MSB 20	20			X	X	X	X	X	X	X	X	X	X	X		X		
MSB 25	25			X	X	X	X	X	X	X	X	X	X	X			X	
MSB 32	32					X	X	X	X	X	X	X	X	X				X
MSB 40	40								X	X	X							

ORDER EXAMPLE:

(Reference page 4)

SPECIFY: QTY: TYPE "D" "L"

EXAMPLE: 6 MSB 8 100

EXAMPLE: 6 MCB 16 150

Note: When ordering, standard quantity breaks are:
1, 2-3, 4-11, 12-23, 24-49, 50-99

FOR STANDARD ALTERATIONS
SEE PAGES 59-63.

CATALOG NUMBER EJECTOR	SHANK DIA D	OVERALL LENGTH "L"											
		50	56	60	63	70	71	80	90	100	110	125	
MCB 05	5	X	X	X	X	X	X	X	X	X			
MCB 06	6	X	X	X	X	X	X	X	X	X			
MCB 08	8	X	X	X	X	X	X	X	X	X			
MCB 10	10	X	X	X	X	X	X	X	X	X	X	X	
MCB 13	13	X	X	X	X	X	X	X	X	X	X	X	
MCB 16	16	X	X	X	X	X	X	X	X	X	X	X	
MCB 20	20		X	X	X	X	X	X	X	X	X	X	
MCB 25	25		X	X	X	X	X	X	X	X	X	X	
MCB 32	32				X	X	X	X	X	X	X	X	
MCB 40	40								X	X	X	X	