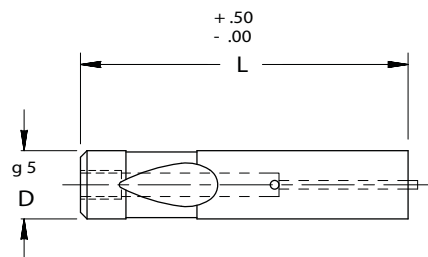
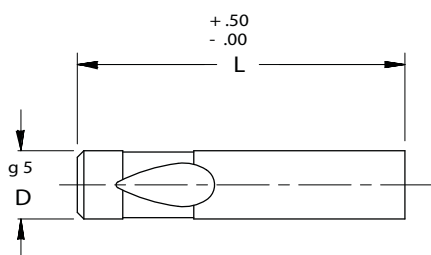


# BALL LOCK PUNCH BLANKS **MOELLER** PRECISION TOOL

## HEAVY DUTY/SOLID/EJECTOR



**Material**  
Steel: M2, HRC 60-63

**ORDER EXAMPLE:**  
(Reference page 4)  
**SPECIFY: QTY: TYPE "D" "L"**  
EXAMPLE: 6 MHB 20 110  
EXAMPLE: 6 MEB 16 90  
Note: When ordering, standard quantity breaks are:  
1, 2-3, 4-11, 12-23, 24-49, 50-99

Complete design & CAD files visit [WWW.MOELLERMCAD.COM](http://WWW.MOELLERMCAD.COM)

FOR STANDARD ALTERATIONS SEE PAGES 59-63.

CATALOG NUMBER SOLID	SHANK DIA D	OVERALL LENGTH "L"											
		71	80	90	100	110	125	150	165	170	175	180	190
MHB 10	10	X	X	X	X	X	X	X					
MHB 13	13	X	X	X	X	X	X	X					
MHB 16	16	X	X	X	X	X	X	X	X				
MHB 20	20	X	X	X	X	X	X	X		X			
MHB 25	25		X	X	X	X	X	X			X		
MHB 32	32		X	X	X	X	X	X				X	
MHB 40	40		X	X	X	X	X	X					X

CATALOG NUMBER EJECTOR	SHANK DIA D	OVERALL LENGTH "L"							EJECTOR SIZE
		63	71	80	90	100	110	125	
MEB 10	10	X	X	X	X	X	X		MAE 4
MEB 13	13	X	X	X	X	X	X	X	MAE 5
MEB 16	16	X	X	X	X	X	X	X	MAE 5
MEB 20	20	X	X	X	X	X	X	X	MAE 6
MEB 25	25			X	X	X	X	X	MAE 6
MEB 32	32			X	X	X	X	X	MAE 6
MEB 40	40			X	X	X	X	X	MAE 6