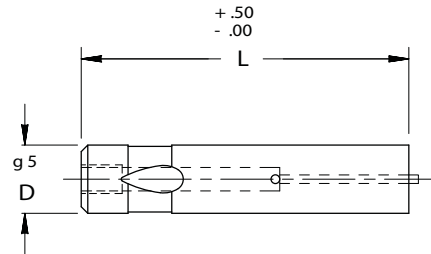
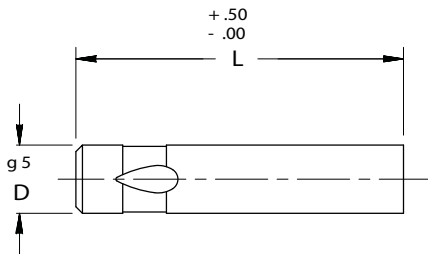


BALL LOCK PUNCH BLANKS **MOELLER** PRECISION TOOL

LIGHT DUTY/SOLID/EJECTOR



Material
Steel: M2, HRC 60-63

ORDER EXAMPLE:
(Reference page 4)
SPECIFY: QTY: TYPE "D" "L"
EXAMPLE: 6 MLB 20 90
EXAMPLE: 6 MJB 16 80
Note: When ordering, standard quantity breaks are:
1, 2-3, 4-11, 12-23, 24-49, 50-99

Complete design & CAD files visit WWW.MOELLERMCAD.COM

FOR STANDARD ALTERATIONS SEE PAGES 59-63.

CATALOG NUMBER	SHANK DIA D	OVERALL LENGTH "L"					
		63	71	80	90	100	125
MLB 06	6	X	X	X	X	X	X
MLB 10	10	X	X	X	X	X	X
MLB 13	13	X	X	X	X	X	X
MLB 16	16	X	X	X	X	X	X
MLB 20	20	X	X	X	X	X	X
MLB 25	25	X	X	X	X	X	X

CATALOG NUMBER	SHANK DIA D	OVERALL LENGTH "L"					EJECTOR SIZE
		63	71	80	90	100	
MJB 06	6	X	X	X	X	X	MAE 3
MJB 10	10	X	X	X	X	X	MAE 4
MJB 13	13	X	X	X	X	X	MAE 5
MJB 16	16	X	X	X	X	X	MAE 5
MJB 20	20	X	X	X	X	X	MAE 6
MJB 25	25	X	X	X	X	X	MAE 6