

# TRUE SET STRIPPERS

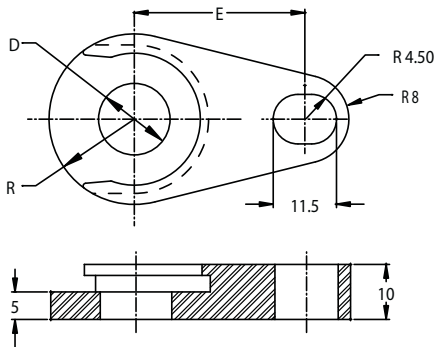


- Innovative One-Piece construction
- Patented cost savings “Snap in” retention feature
- Interchangeable and complies with NAAMS standards
- Precision machined to assure perpendicularity resulting in prolonged Urethane life
- Adaptable to special multi-hole Retainers



## MTR STYLE STRIPPER RETAINER

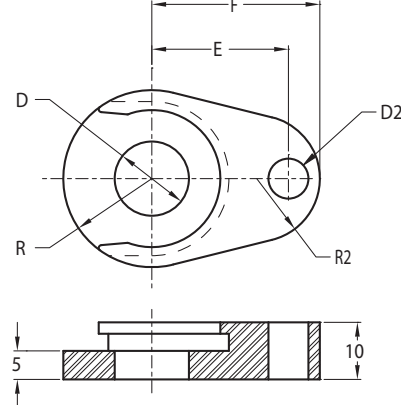
(To be used with Standard MRH True Set Retainer)



Catalog No.	D	R	E
MTR 10	10	13	28
MTR 13	13	15.5	31
MTR 16	16	18	32.9
MTR 20	20	20.5	34.8
MTR 25	25	24	39.8
MTR 32	32	31	41.3
MTR 40	40	36	45

## MTP STYLE STRIPPER RETAINER

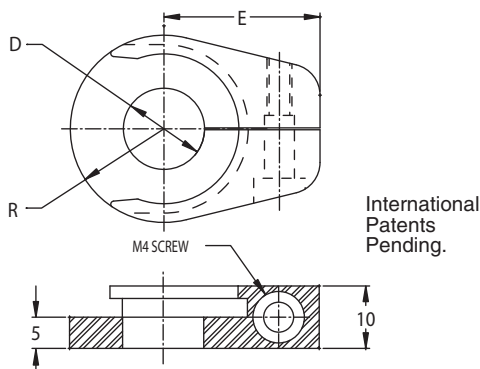
(To be used with the Round MRR True Set Retainer)



Catalog No.	D	R	E	F	D2	R2
MTP 10	10	13.0	21.0	26.5	7	10.0
MTP 13	13	15.5	23.9	29.4	7	11.0
MTP 16	16	18.0	24.5	30.0	7	12.8
MTP 20	20	20.5	29.0	36.0	9	11.8
MTP 25	25	24.0	33.5	40.5	9	12.9
MTP 32	32	31.0	40.6	49.3	9	8.0
MTP 40	40	36.0	44.0	53.0	9	8.0

## MTM STYLE STRIPPER RETAINER

(To be used with MRM and Multi Hole Retainer)



Catalog No.	D	R	E
MTM 10	10	13	22.5
MTM 13	13	15.5	25
MTM 16	16	18	27.5
MTM 20	20	20.5	30
MTM 25	25	24	35.5
MTM 32	32	31	37.5
MTM 40	40	36	42.3

U.S. Patent No. 7,707,919B1 International Patents Pending.