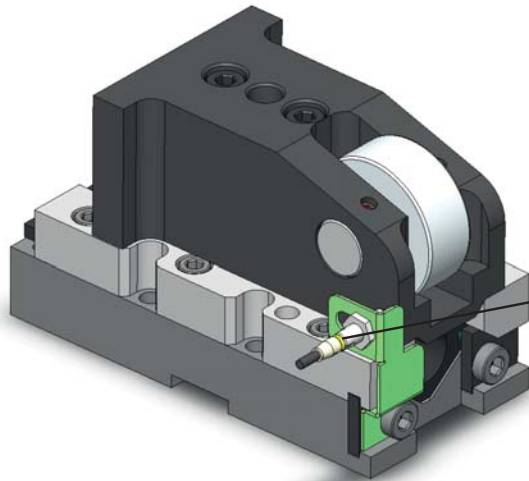
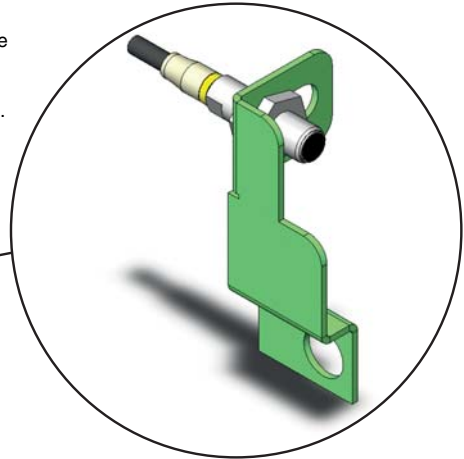


Roller Cam – Sensor Kit

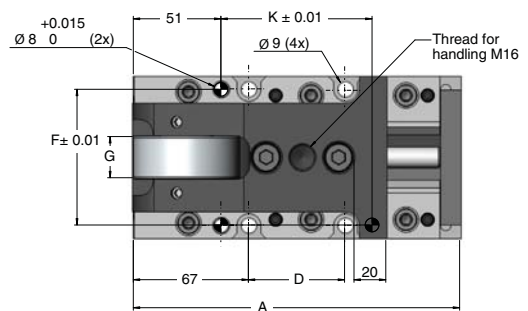
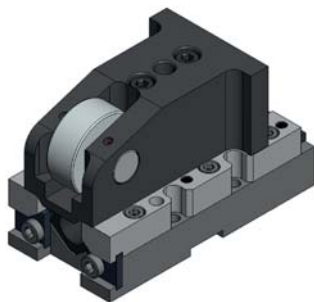
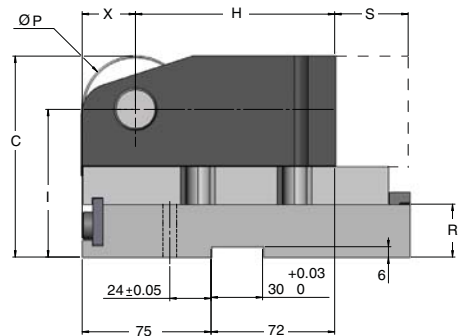
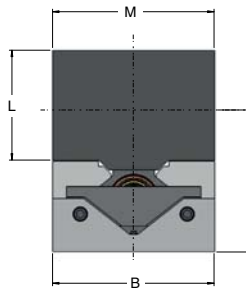
Roller Cam Sensor Kits are an optional accessory to all Roller Cams, providing a signal to the press when the Roller Cam is in start position. The Sensor Kit can easily be attached to the Roller Cam using return stop screw.



Note! For more information, please contact your local distributor or Strömsholmen AB.



Dimensions RC2 30 & RC2 50



RC2 30 & 50

Order No.	Stroke S (mm)	Nominal force (daN)	Initial return force (daN)	Gas spring	A	B	C	D	F	G	H	I	K	L	M	P	R	X	Max. width of the driver
RC2 30-050	50	3,000	200	M2 200	190	94	117	56	79	25	116	86	88	64	94	62	31	31	36
RC2 30-080	80				86			118											
RC2 50-050	50	5,000	350	X 350	190	120	140	56	105	29	111	103	88	75	120	72	40	36	
RC2 50-080	80				86			118											
RC2 50-100	100				240	157	126								120	158			57

Note! For 2D & 3D CAD downloads, see www.kaller.com.