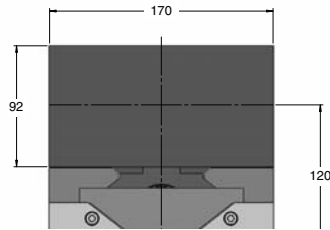
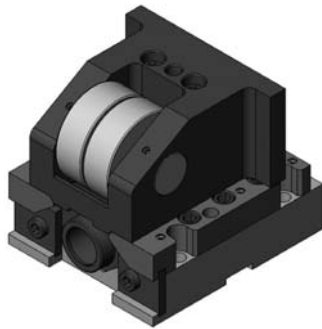
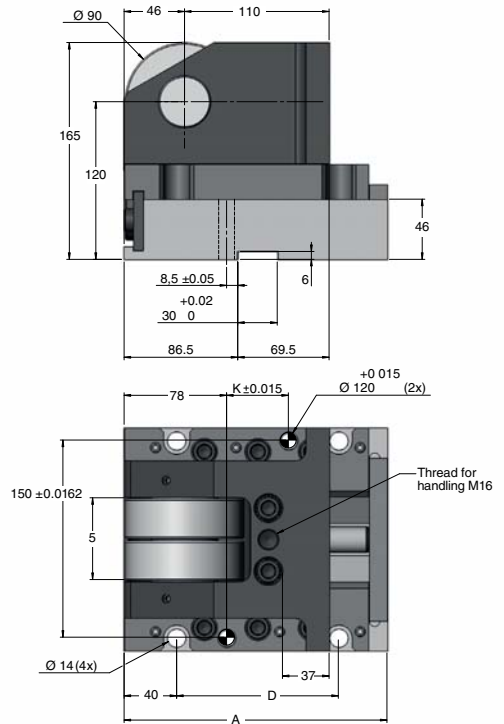


Dimensions RCP2 150

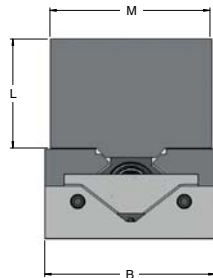
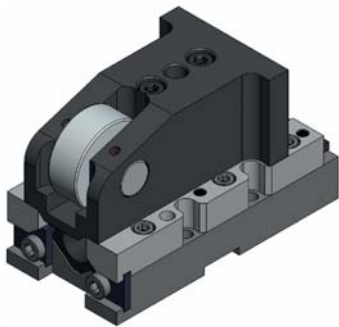


RCP2 150
Dimensions as per PSA standard

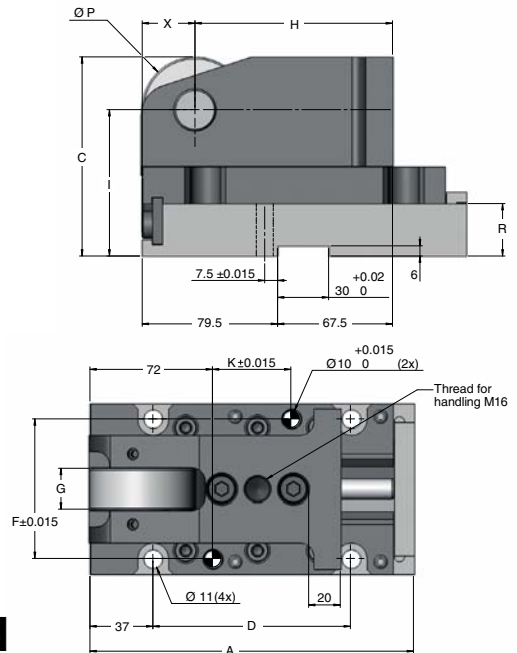
Order No.	Stroke S (mm)	Nominal force (daN)	Initial return force (daN)	Gas spring	A	D	K	Max. width of the driver
RCP2 150-050	50	15,000	500	X 500	200	123	47	62
RCP2 150-080	80				230	153	77	
RCP2 150-100	100				250	173	97	



Dimensions RCP2 30 & RCP2 50



RCP2 30 & 50
Dimensions as per PSA standard



Order No.	S Stroke (mm)	Nominal force (daN)	Initial return force (daN)	Gas spring	A	B	C	D	F	G	H	I	K	L	M	P	R	X	Max. width of the driver
RCP2 30-050	50	3,000	200	M2 200	190	100	117	116	82	25	116	86	46	64	94	62	31	31	36
RCP2 30-080	80				220			146					76						
RCP2 50-050	50	5,000	350	X 350	190	120	140	116	102	29	111	103	46	75	120	72	40	36	
RCP2 50-080	80				220			146					76						
RCP2 50-100	100				240			166					96						

Note! For 2D & 3D CAD downloads, see www.kaller.com