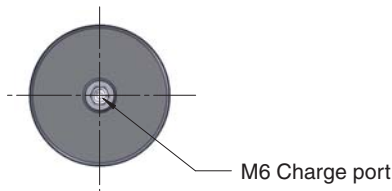


X 320



The Power Line Series includes our shortest and most powerful Piston Rod Sealed gas springs, offering impressive force in a very compact format.

The Power Line springs are available with forces from 1,700 N up to 200,000 N and stroke lengths between 7 and 125 mm.

The X 320 has a bottom port for gas charging that can also be used to connect to a gas link system.

The X 320 has an upper ISO Standard C-groove that together with a threaded bottom hole offers various mounting possibilities using our standard mounts.

Order No.	Stroke	Force in N at 180 bar/+20°C		Force in lbf at 180 bar/+20°C		L ±0.25	L min.	Gas vol. (l)	Weight (kg)
		Initial	End force*	Initial	End force*				
X 320-007	7	3,200	4,800	720	1,080	44	37	0.004	0.10
X 320-010	10		4,900		1,100	50	40	0.005	0.11
X 320-015	15		5,100		1,150	60	45	0.007	0.12
X 320-019	19		5,100		1,150	68	49	0.009	0.13
X 320-025	25		5,200		1,170	80	55	0.011	0.14
X 320-038	38		5,300		1,190	106	68	0.017	0.16
X 320-050	50		5,300		1,190	130	80	0.022	0.19
X 320-063	63		5,300		1,190	156	93	0.028	0.21
X 320-075	75		5,300		1,190	185	110	0.034	0.24
X 320-080	80		5,300		1,190	195	115	0.036	0.25
X 320-100	100	5,300	1,190	235	135	0.044	0.29		
X 320-125	125	5,300	1,190	285	160	0.055	0.33		

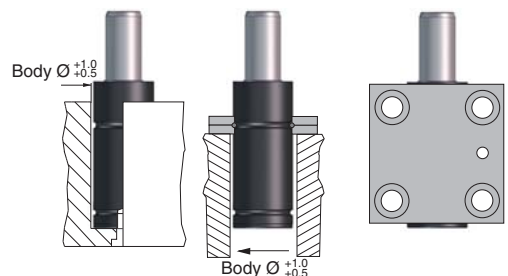
*= at full stroke.

Basic Information

For general information see "About gas springs", 2.1
 Pressure medium Nitrogen
 Max. charging pressure 180 bar (at 20° C)
 Min. charging pressure 25 bar (at 20° C)
 Operating temperature 0 to +80°C
 Force increase by temperature ±0.3%/°C
 Recommended max strokes/min ... ~ 40-100 (at 20°C)
 Max piston rod velocity 1.6 m/s

Rod surface..... Nitrided
 Tube surface Black oxide
 Repair kit Non-repairable

Mounting Possibilities

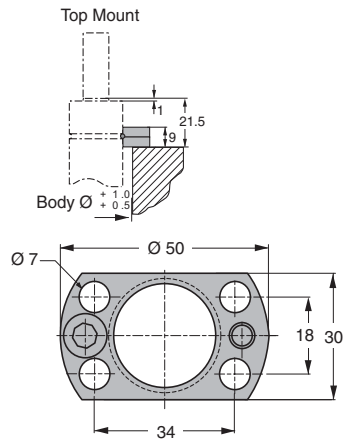


Base mount
Drop - in, B
 only to be used
 for strokes 7-25

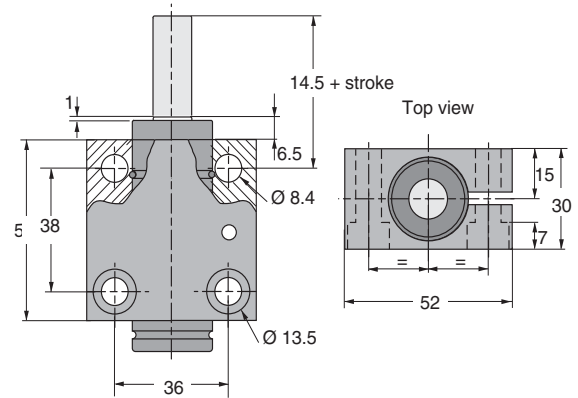
Top mount
FCR, FC

Body mount
SM

FCR
Order No: FCR-150



SM
Order No: SM-150



FC-150
Order No: FC-150

