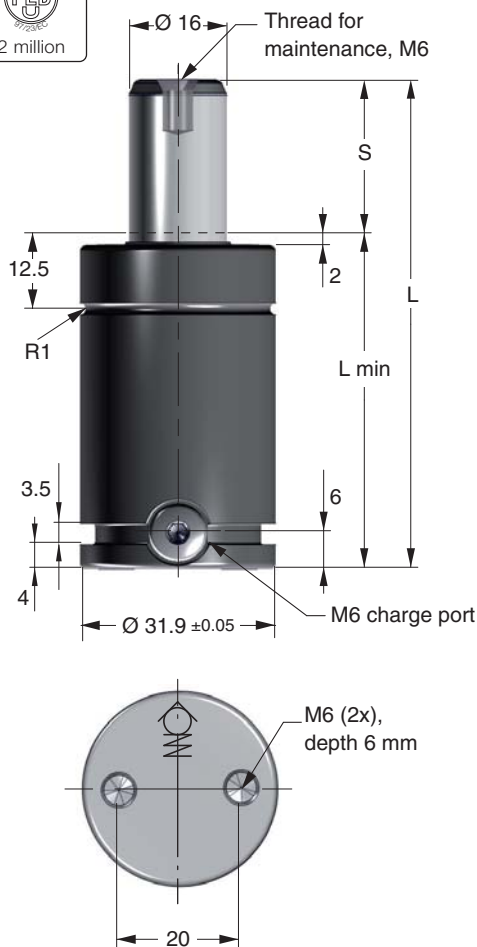


X 350



The Power Line Series includes our shortest and most powerful Piston Rod Sealed gas springs, offering impressive force in a very compact format.

These gas springs are available with forces from 1,700 N up to 200,000 N and stroke lengths between 7 and 125 mm.

There is a side port for gas charging that can also be used to connect to a gas link system.

An upper C-groove, lower U-groove together with two M6 threaded holes allow various mounting possibilities using our standard mounts.

Order No.	S stroke	Force in N at 180 bar/+20°C		Force in lbf at 180 bar/+20°C		L ±0.25	L min.	Gas vol. (l)	Weight (kg)
		Initial	End force*	Initial	End force*				
X 350-010	** 10	3,600	5,900	810	1,330	50	40	0.01	0.17
X 350-013	** 13		5,200		1,190	56	43	0.01	0.18
X 350-016	** 16		5,300		1,210	62	46	0.01	0.19
X 350-019	19		5,600		1,260	68	49	0.01	0.20
X 350-025	** 25		5,500		1,260	80	55	0.02	0.22
X 350-032	32		5,500		1,260	94	62	0.02	0.24
X 350-038	** 38		5,500		1,240	106	68	0.03	0.26
X 350-050	** 50		5,600		1,260	130	80	0.03	0.29
X 350-063	** 63		5,500		1,260	156	93	0.04	0.33
X 350-075	75		5,500		1,260	180	105	0.05	0.37
X 350-080	** 80		5,500		1,240	190	110	0.05	0.39
X 350-100	** 100		5,500		1,240	230	130	0.06	0.45
X 350-125	** 125		5,500		1,240	280	155	0.08	0.53

* = at full stroke

** Recommended stroke length for optimal delivery

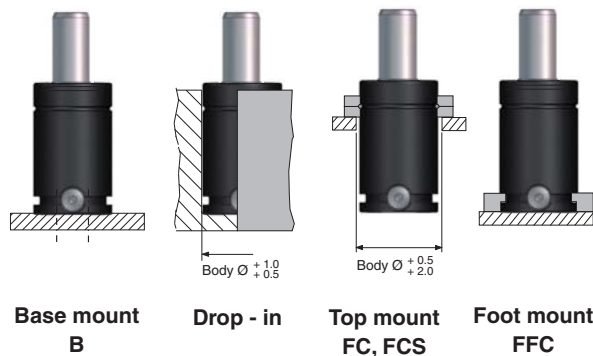
Basic Information

For general information see "About gas springs", 2.1

Pressure medium Nitrogen
 Max. charging pressure 180 bar (at 20°C)
 Min. charging pressure 25 bar (at 20°C)
 Operating temperature 0 to +80°C
 Force increase by temperature ±0.3%/°C
 Recommended max strokes/min ... ~ 50 to 100 (at 20°C)
 Max piston rod velocity 1.6 m/s

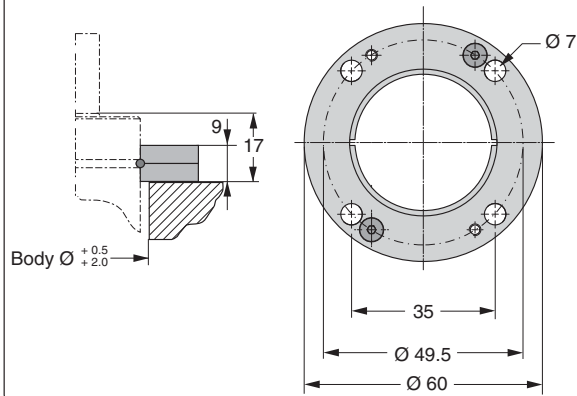
Rod surface Nitrided
 Tube surface Black oxide
 Repair kit 3018845

Mounting Possibilities

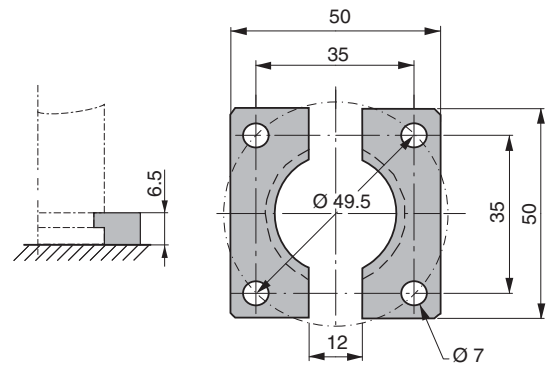


X 350 Mounts

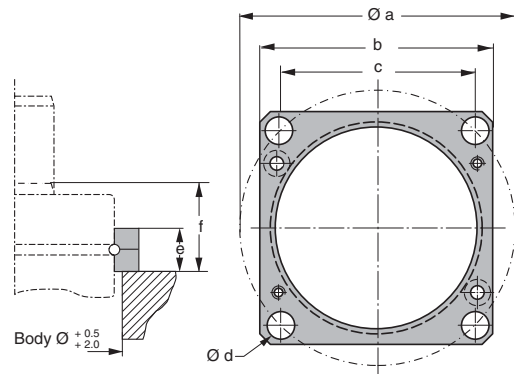
FC
Order No. FC-MC-150



FFC
Order No. FFC-MC-150



FCS



Order No.	$\varnothing a$	b	c	$\varnothing d$	e	f
FCS-32	49.5	45	35	7	9	17