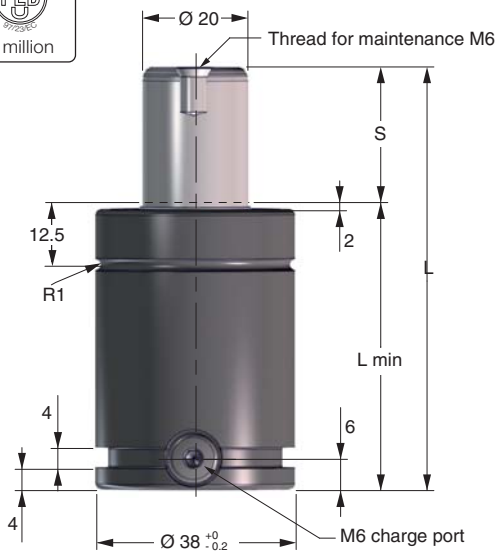


X 500

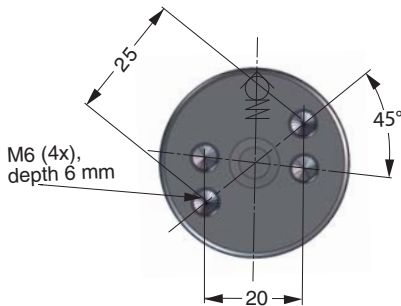


The Power Line Series includes our shortest and most powerful Piston Rod Sealed gas springs, offering impressive force in a very compact format.

These gas springs are available with forces from 1,700 N up to 200,000 N and stroke lengths between 7 and 125 mm.

There is a side port for gas charging that can also be used to connect to a hose system.

An upper C-groove, lower U-groove together with two M6 threaded holes allow various mounting possibilities using our standard mounts.



Order No.	S stroke	Force in N at 150 bar/+20°C		Force in lbf at 150 bar/+20°C		L ±0.25	L min.	Gas vol. (l)	Weight (kg)
		Initial	End force*	Initial	End force*				
X 500-010	** 10		7,200		1,620	50	40	0.01	0.25
X 500-013	** 13		7,100		1,600	56	43	0.01	0.26
X 500-016	** 16		7,200		1,620	62	46	0.02	0.27
X 500-019	19		7,400		1,660	68	49	0.02	0.29
X 500-025	** 25		7,300		1,640	80	55	0.03	0.31
X 500-032	32		7,200		1,620	94	62	0.03	0.34
X 500-038	** 38	4,700	7,200	1,055	1,620	106	68	0.04	0.36
X 500-050	** 50		7,200		1,620	130	80	0.05	0.41
X 500-063	** 63		7,200		1,620	156	93	0.06	0.46
X 500-075	75		7,100		1,600	180	105	0.07	0.50
X 500-080	** 80		7,100		1,600	190	110	0.08	0.52
X 500-100	** 100		7,100		1,600	230	130	0.10	0.60
X 500-125	** 125		7,100		1,600	280	155	0.12	0.69

* = at full stroke

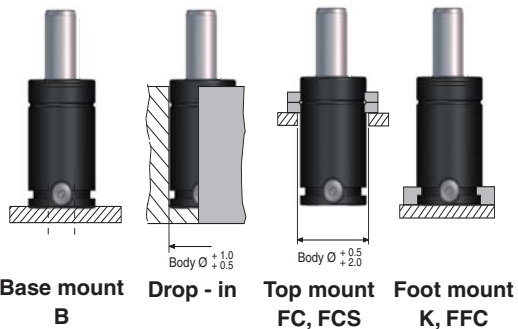
** Recommended stroke length for optimal delivery

Basic Information

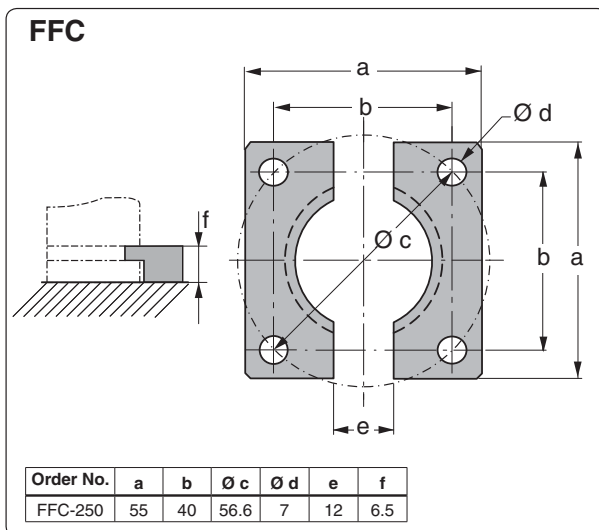
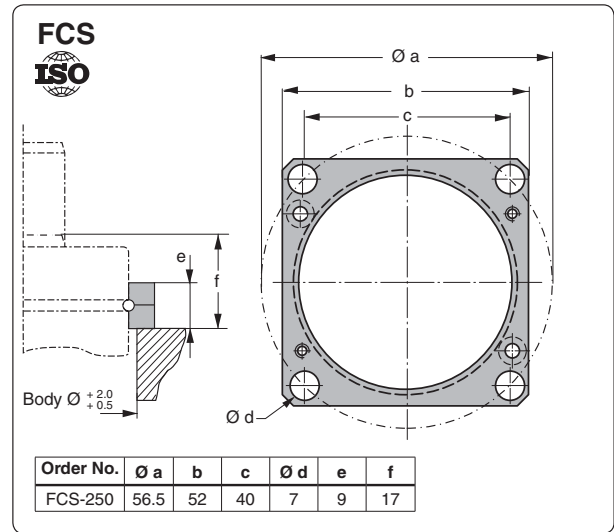
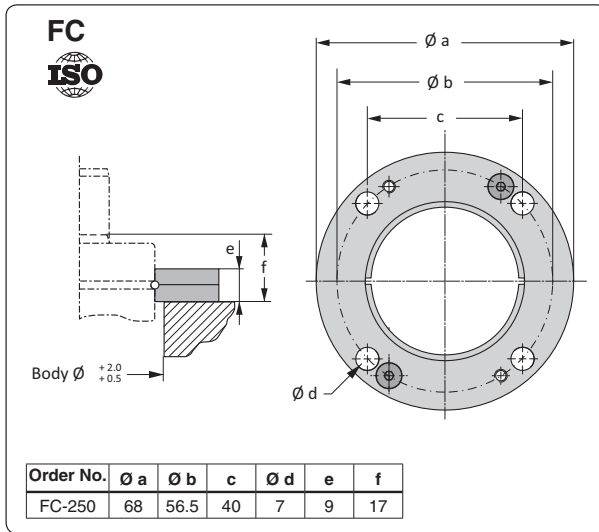
For general information see "About gas springs", 2.1
 Pressure medium Nitrogen
 Max. charging pressure 150 bar (at 20°C)
 Min. charging pressure 25 bar (at 20°C)
 Operating temperature 0 to +80°C
 Force increase by temperature ±0.3%/°C
 Recommended max strokes/min ... ~ 50 to 100 (at 20°C)
 Max piston rod velocity 1.6 m/s

Rod surface Nitrided
 Tube surface Black oxide
 Repair kit 3018846

Mounting Possibilities



Note! For dimensions on mounting possibility K-500 refer to Chapter 3.



Note! For dimensions on mounting possibility K-500 refer to Chapter 3.